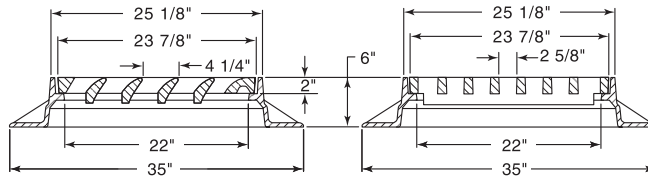


**R-3210-L
Catch Basin Frame, Grate**

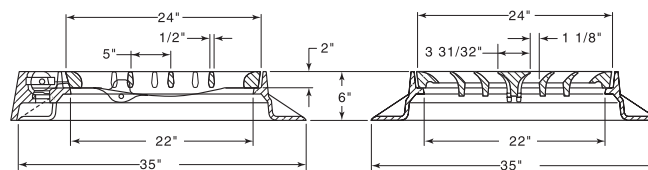
Heavy Duty



| CATALOG NUMBER | GRATE TYPE | SQ. FT. OPEN | WEIR PERIMETER LINEAL FEET |
|----------------|------------|--------------|----------------------------|
| R-3210-L | L | 1.5 | 8.0 |

**R-3210-LLM
Catch Basin Frame, LiftMate Grate**

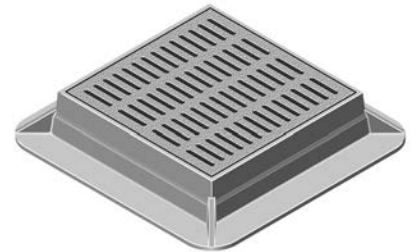
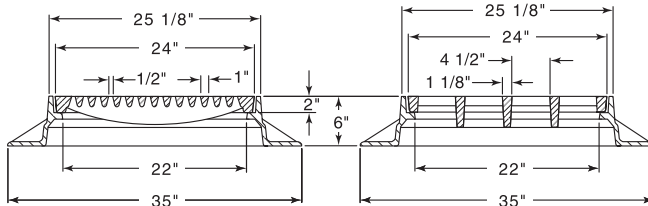
Heavy Duty



| CATALOG NUMBER | GRATE TYPE | SQ. FT. OPEN | WEIR PERIMETER LINEAL FEET |
|----------------|------------|--------------|----------------------------|
| R-3210-LLM | L | 1.4 | 8.0 |

**R-3210-Q
Catch Basin Frame, Grate**

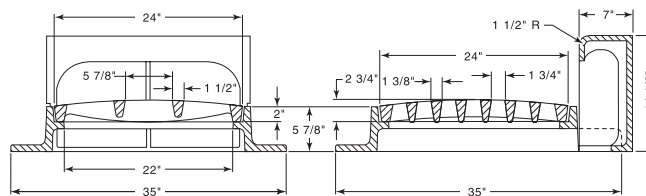
Heavy Duty



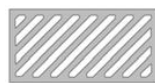
| CATALOG NUMBER | GRATE TYPE | SQ. FT. OPEN | WEIR PERIMETER LINEAL FEET |
|----------------|------------|--------------|----------------------------|
| R-3210-Q | Q | 0.8 | 8.0 |

**R-3220
Combination Inlet Frame, Convex Grate, Curb Box**

Heavy Duty



Standard Grate (shown): Type C
Alternate Grate(s):



Type R

| CATALOG NUMBER | GRATE TYPE | SQ. FT. OPEN | WEIR PERIMETER LINEAL FEET |
|----------------|------------|--------------|----------------------------|
| R-3220 | C | 1.5 | 8.0 |
| R-3220 | R | 1.6 | 8.0 |

Available with square curb face or radius face of 1", 1-1/2", 2" or 3".

COMBINATION
INLETS

3